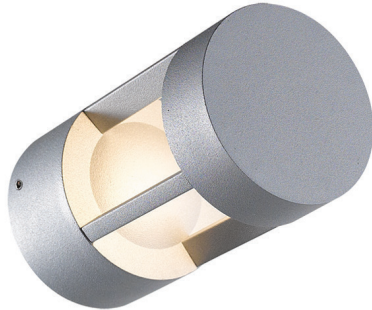




BOWLER ROUND-W\G

LED outdoor wall-mounted lighting 7W, IP65.

The luminaire has an ergonomic and convenient design, and is suitable for accentual lighting. Suitable for use as outdoor lighting. The driver and the power supply are located inside the housing.



Bowler Round-G 200 7W 220V IP65

SPECIFICATION

Housing: Pressure die-cast aluminum alloy with polyester powder paint. Body and glass are fitted with silicone sealants.

Fasteners: Stainless steel, T=2.00mm

Glass: tempered glass, 3,0 mm

Housing color: Black, Grey, White

Color temperature, K: 3000K, 4000K, 6000K

Color rendering index, CRI: 82

Power Factor: 0.9

Control system: Switch On\Off

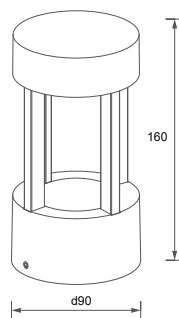
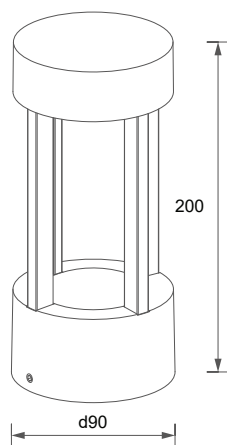
Input voltage, V: 220V

Ingress Protection Rating, IP: IP65

Operating temperature: -40°C to +45°C (at startup: -20°C)



Bowler Round-W 7W 220V IP65



Article	Name	Power, W	Dimensions, mm	Input voltage, V	Color Temperature, K	Weight, kg
69503160	Bowler Round-W 7W 220V IP65	7W	d 90 x 160	220V	3000K-6000K	0.69kg
69503170	Bowler Round-G 200 7W 220V IP65	7W	d 90 x 200	220V	3000K-6000K	0.90kg