

# CROW

## Manual



# Installation Instructions

## A. Technical Parameters

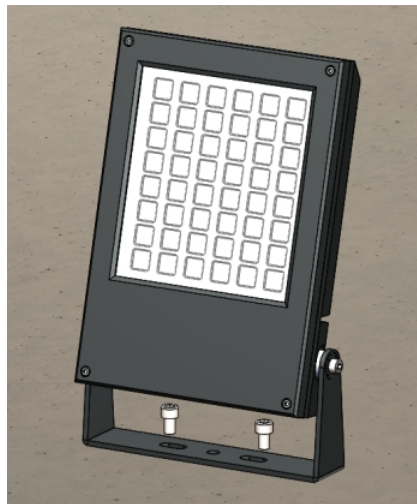
Product name	CROW
Product code	622 series
Input Voltage	DC 24/36V, AC 220V
Power	22-225W
Beam Angle	8°, 12.5°, 20°, 30°, 48°, 60°, 15x30°, 10x60°, 120x70°
Color temperature	SINGLE COLOR, RGB, RGBW
Working Environment	-40°C to +50°C
Net weight	2-12Kg
Control Mode	Switch ON/OFF, 1-10, DMX-512, DALI

## B. Applications:

Outdoor architectural lighting.

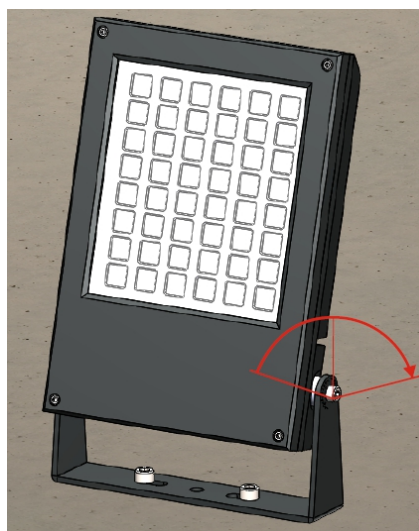
## C. Installation

1. According to step 1, fix the bracket on the mounting surface.



Step 1

2. According to step 2, adjust the bracket as your project needed.



Step 2

3. Notes

The fixture must get reliable connection with the mounting surface, any screws in the lamps should not be arbitrarily loosed. There is no special requirement on the installation direction.

**Attention:** ■ When you get the fixtures is class III, please use a power supply to light. ■ When you get the RGB DMX512 fixture, please accurately connect the DMX cables, otherwise, it will influence the regular work.