

SKIFF SINGLE S



view



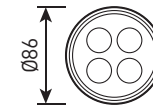
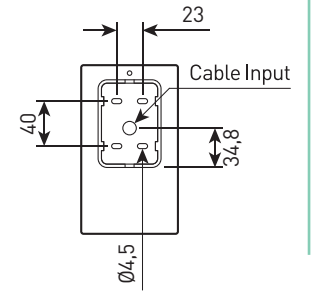
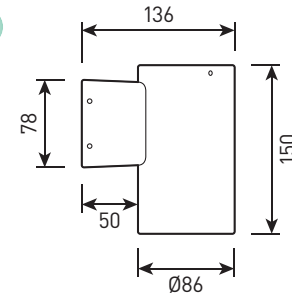
1 SKIFF SINGLE S

2 SKIFF SINGLE S QUADRO

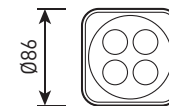
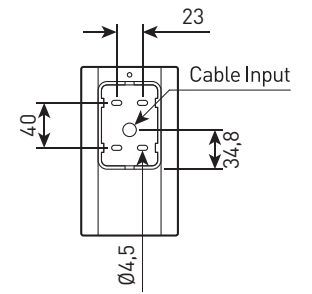
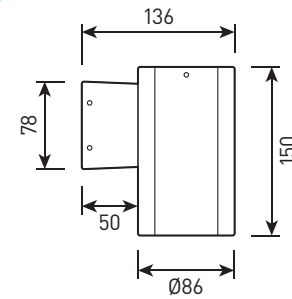


size

1



2



SKIFF SINGLE S

LED wall luminaire for architectural lighting

Housing:	Pressure die-cast aluminum alloy with polyester powder paint
Beam angle:	5°, 8°, 10°, 12°, 25°, 40°, 60°, 15x55°
Housing color:	Black, White, RAL
IES protection classes:	Class I (SELV)
Color temperature, K:	2700K, 3000K, 4000K, 5000K, 5700K, 6500K, RGB 3in1, RGBW 4in1
Input voltage, V:	24V, 220V
Control system:	On/Off, 0-10V, DALI, DMX-512
Ingress Protection Rating, IP:	IP65
Operating temperature:	-40°C ~ +50°C
Weight, kg:	1.5 kg

Article	Name	Power, W	Dimensions, mm	Input voltage, V	Beam angle, degrees	Color temperature, K	Weight, kg
644012052	SKIFF S 15W SINGLE 220V IP65	15W	D86x150	220V	5°, 8°, 10°, 12°, 25°, 40°, 60°, 15x55°	2700K, 3000K, 4000K, 5000K, 5700K, 6500K	1.5
644012054	SKIFF S 15W DMX-512 RGB 3in1 24V IP65	15W	D86x150	24V	25°, 40°, 60°	RGB	1.5
644012056	SKIFF S 24W DMX-512 RGBW 4in1 24V IP65	24W	D86x150	24V	25°, 40°, 60°	RGBW	1.5
644012058	SKIFF S QUADRO 15W SINGLE 220V IP65	15W	86x86x150	220V	5°, 8°, 10°, 12°, 25°, 40°, 60°, 15x55°	2700K, 3000K, 4000K, 5000K, 5700K, 6500K	1.5
644012060	SKIFF S QUADRO 15W DMX-512 RGB 3in1 24V IP65	15W	86x86x150	24V	25°, 40°, 60°	RGB	1.5
644012062	SKIFF S QUADRO 24W DMX-512 RGBW 4in1 24V IP65	24W	86x86x150	24V	25°, 40°, 60°	RGBW	1.5