

HOVER QUADRO S



view

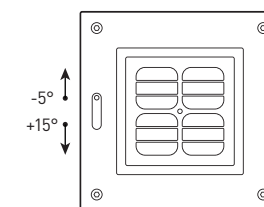
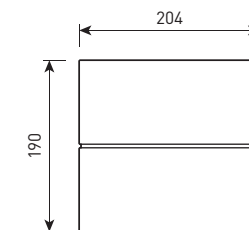
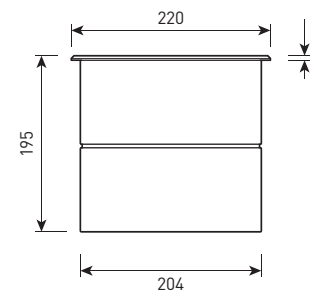
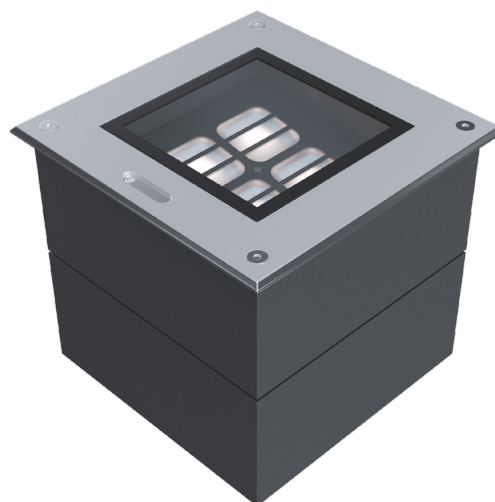
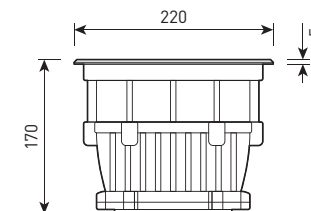
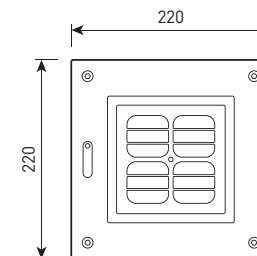
size



1 overall dimensions



1



HOVER QUADRO S

Built-in ground lamp with adjustable optical part

Housing:	Pressure die-cast aluminum alloy with polyester powder paint
Beam angle:	2°, 4.5°, 8°, 12°, 20°, 30°, 45°, 60°, 10×70°, 5×20°, 15×60°
Housing color:	Metallic
IES protection classes:	Class I (SELV)
Color temperature:	2700K, 3000K, 4000K, 5000K, 6000K, R, G, B, RGBW 4in1
Input voltage:	220V
Control system:	On/Off, 0-10V, DALI, DMX-512
Ingress Protection Rating, IP:	IP67
Operating temperature:	-40°C ~ +50°C
Weight:	5.0 kg

Article	Name	Power, W	Dimensions, mm	Input voltage, V	Beam angle, degrees	Color temperature, K	Weight, kg
791200142	HOVER QUADRO S 30W 220V SINGLE IP67	30W	220x220x195	220V	2°, 4.5°, 8°, 12°, 20°, 30°, 45°, 60°, 10×70°, 5×20°	2700K, 3000K, 4000K, 5000K, 6000K, R, G, B	5.0
791200144	HOVER QUADRO S 40W 220V DMX RGBW 4in1 IP67	40W	220x220x195	220V	8°, 15°, 20°, 30°, 15×60°	RGBW 4 in 1	5.0