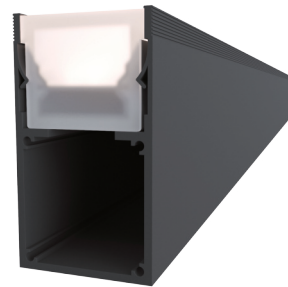


view

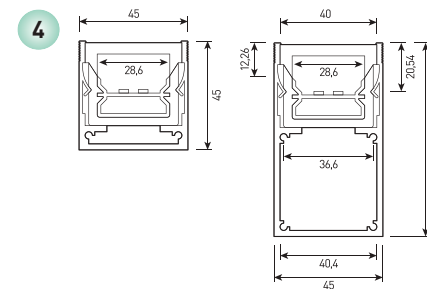
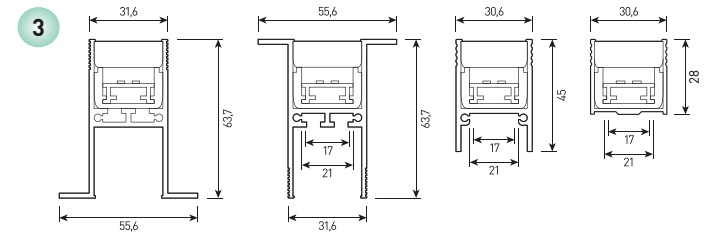
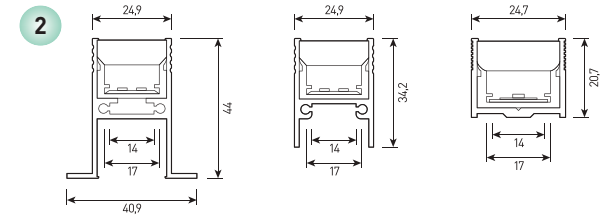
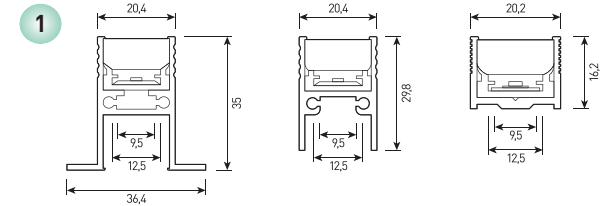


RAL

- 1 LANTEK XS
- 2 LANTEK S
- 3 LANTEK M
- 4 LANTEK L



size



LANTEK

Recessed linear ground luminaire

Housing:	Extruded aluminum with a protective anti-corrosion coating
Beam angle:	120°
Housing color:	Metallic, RAL
IES protection classes:	Class III (SELV)
Color temperature, K:	3000K, 4000K, 5000K
Input voltage, V:	24V
Control system:	On/Off, 1-10V, DMX-512, TRIAC, DALI
Ingress Protection Rating, IP:	IP67
Operating temperature:	-40°C ~ +50°C
Weight, kg:	0.5 - 2.0 kg

Article	Name	Power, W	Dimensions, mm	Input voltage, V	Beam angle, degrees	Color temperature, K	Weight, kg
791400110	LANTEK XS 500mm 5W 24V IP67 SINGLE	5W	20.2x16.2x500	24V	120°	3000K, 4000K, 5000K	0.5
791400112	LANTEK XS 1000mm 10W 24V IP67 SINGLE	10W	20.2x16.2x1000	24V	120°	3000K, 4000K, 5000K	1.0
791400114	LANTEK S 500mm 7.5W 24V IP67 SINGLE	7.5W	20.7x24.7x500	24V	120°	3000K, 4000K, 5000K	0.6
791400116	LANTEK S 1000mm 15W 24V IP67 SINGLE	15W	20.7x24.7x1000	24V	120°	3000K, 4000K, 5000K	1.1
791400118	LANTEK M 500mm 10W 24V IP67 SINGLE	10W	28x30.6x500	24V	120°	3000K, 4000K, 5000K	0.8
791400120	LANTEK M 1000mm 20W 24V IP67 SINGLE	20W	28x30.6x1000	24V	120°	3000K, 4000K, 5000K	1.5
791400122	LANTEK L 500mm 15W 24V IP67 SINGLE	10W	45x45x500	24V	120°	3000K, 4000K, 5000K	1.0
791400124	LANTEK L 1000mm 30W 24V IP67 SINGLE	30W	45x45x1000	24V	120°	3000K, 4000K, 5000K	2.0